

ACCOMMODATIONS SYMBOL LEGEND

- ▲ Twin Bed and Single Sofa Bed
- ★ 2 Twin Beds (convert to King) and Single Sofa Bed
- 2 Twin Beds (convert to King) and 1 Upper Pullman
- 2 Twin Beds (convert to King) and 2 Upper Pullmans
- 2 Twin Beds (convert to King), Single Sofa Bed and 1 Upper Pullman
- † 2 Twin Beds (convert to King) and Double Sofa Bed
- 2 Twin Beds (convert to King), Single Sofa Bed with Convertible Bunk

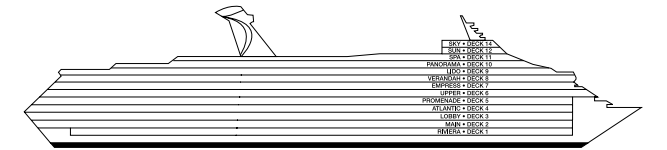
- ◆ Stateroom with 2 Porthole Windows
 - ◁ Connecting staterooms (ideal for families and groups of friends)
 - * Twin Beds do not convert to a King Bed.
 - U Unisex Wheelchair Accessible Restroom
 - ☞ All accommodations are non-smoking.
- Stateroom features and layouts may vary. Deck plan is subject to change.

Accessible staterooms are available for guests with disabilities. For details, please contact: **For US guests:** Call Guest Access Services at 1-800-438-6744 ext. 70025, or visit <https://www.carnival.com/about-carnival/special-needs.aspx>. **For Australia and New Zealand guests:** Call the Carnival Reservations Department, Guest Services: Australia 13 31 94; New Zealand 0800 442 095.

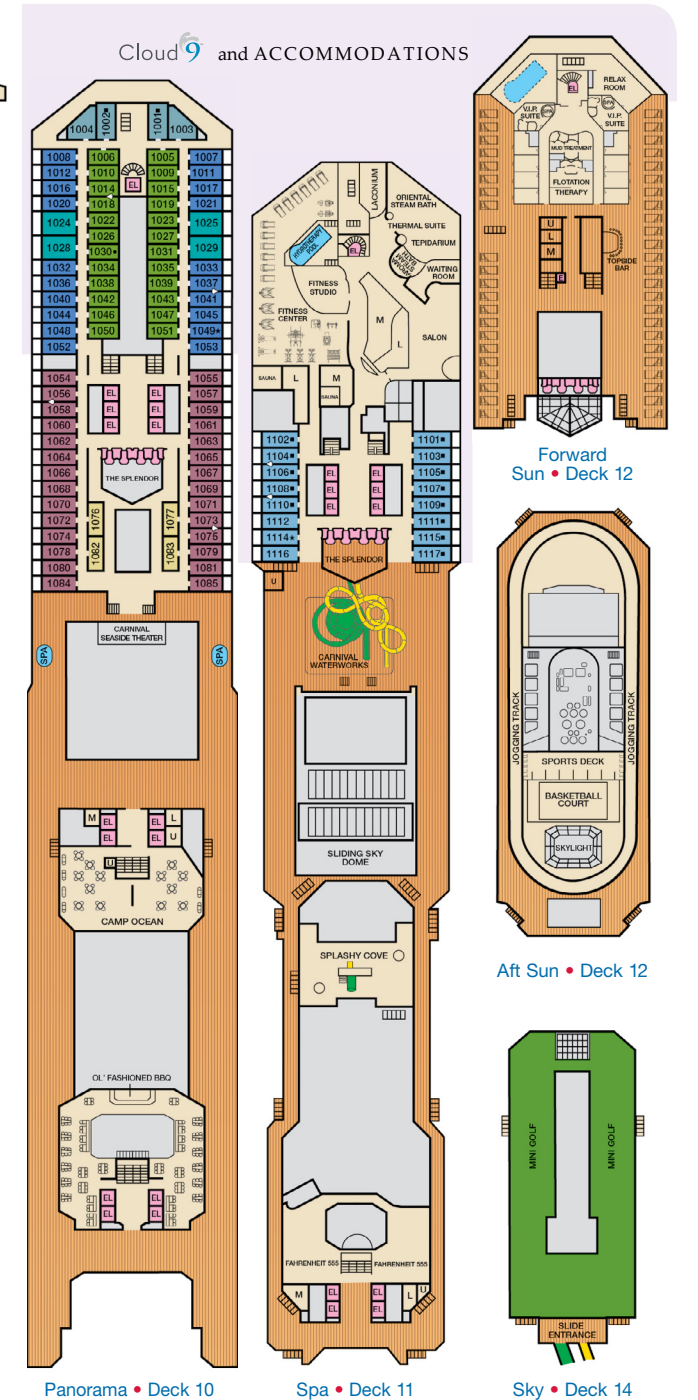
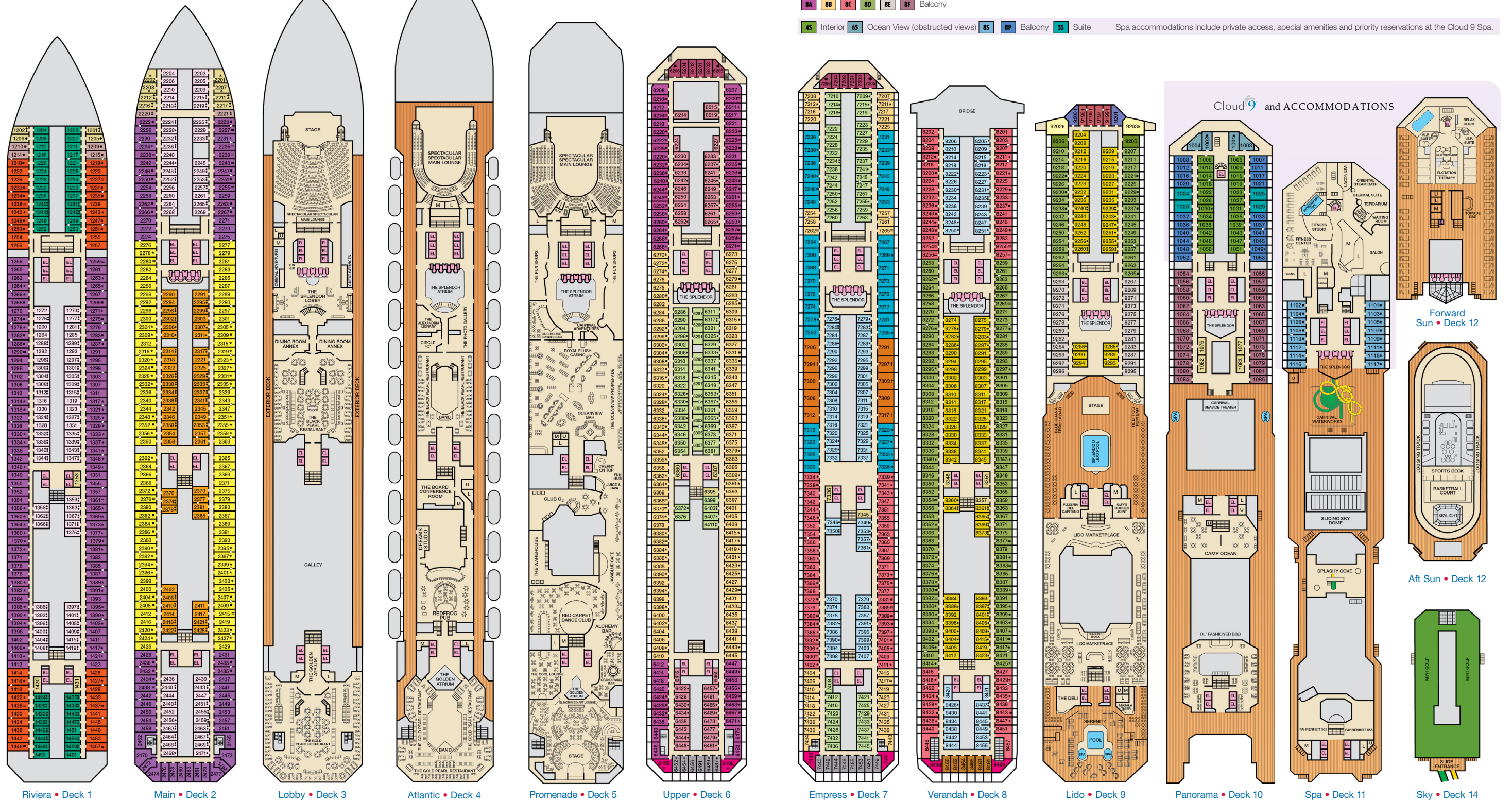
CATEGORIES

- 1A Interior Upper/Lower
- PT Porthole
- 4A 4B 4C 4D 4E 4F 4G Interior
- 4J Interior with Picture Window (obstructed views)
- 6A 6B 6C Ocean View
- 6J Scenic Ocean View
- 6K Scenic Grand Ocean View
- 8A 8B 8C 8D 8E 8F Balcony
- 8M 8N Aft-View Extended Balcony
- 9C Premium Vista Balcony
- 9S Junior Suite
- OS Ocean Suite
- GS Grand Suite
- CS Captain's Suite
- 4S Interior
- 6S Ocean View (obstructed views)
- 8S Balcony
- SS Suite

Spa accommodations include private access, special amenities and priority reservations at the Cloud 9 Spa.



Gross Tonnage: 113,300 Length: 952 Feet Beam: 116 Feet
 Cruising Speed: 21 Knots Guest Capacity: 3,012 (Double Occupancy)
 Total Staff: 1,150 Registry: Panama



ACCOMMODATIONS SYMBOL LEGEND

- ▲ Twin Bed and Single Sofa Bed
- ★ 2 Twin Beds (convert to King) and Single Sofa Bed
- 2 Twin Beds (convert to King) and 1 Upper Pullman
- 2 Twin Beds (convert to King) and 2 Upper Pullmans
- 2 Twin Beds (convert to King), Single Sofa Bed and 1 Upper Pullman
- † 2 Twin Beds (convert to King) and Double Sofa Bed
- ▬ 2 Twin Beds (convert to King), Single Sofa Bed with Convertible Bunk

- ◆ Stateroom with 2 Porthole Windows
 - ◊ Connecting staterooms (ideal for families and groups of friends)
 - ✱ Twin beds do not convert to a King Bed.
 - ✱ Unisex Wheelchair Accessible Restroom
 - ✱ All accommodations are non-smoking.
- Stateroom 7226 has whirlpool tub and shower.

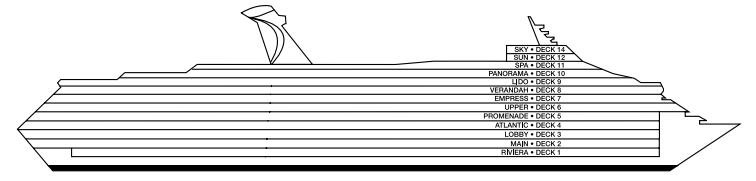
- Accessible Routes including Ramps
- Restrooms, Elevators, Lifts and other Accessible Areas
- Fully Accessible Staterooms (FAC)
- Fully Accessible Staterooms - Single Side Approach (FAC-SSA)
- Ambulatory Accessible Staterooms (AAC)

Stateroom features and layouts may vary. Deck plans subject to change.

DECK PLANS

For specific ship accessibility features, please contact:
For US guests: Call Guest Access Services at 1-800-438-6744 ext. 70025, or visit <https://www.carnival.com/about-carnival/special-needs.aspx>
For Australia and New Zealand guests: Call the Carnival Reservations Department, Guest Services: Australia 13 31 94; New Zealand 0800 442 095.

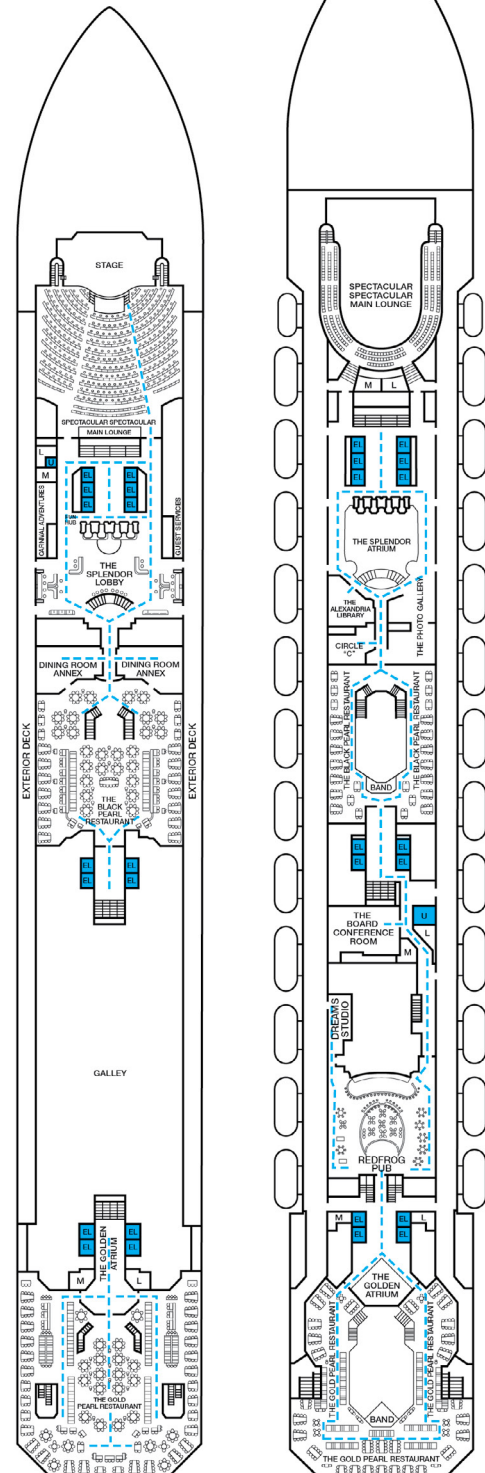
Spa accommodations include private access, special amenities and priority reservations at the Cloud 9 Spa.



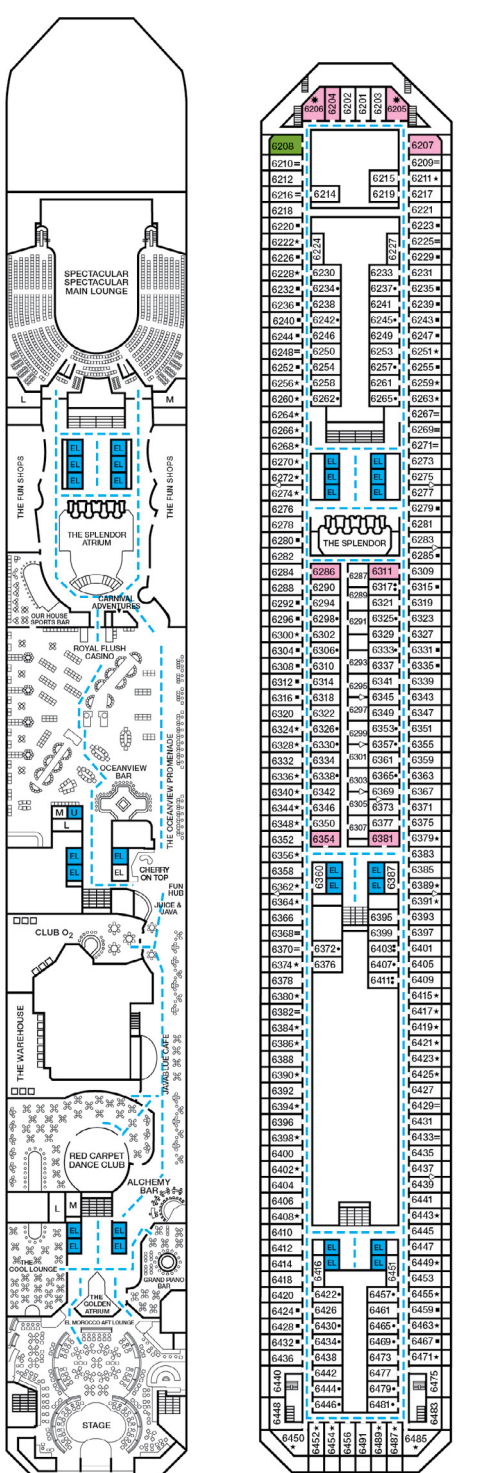
Gross Tonnage: 113,300 Length: 952 Feet Beam: 116 Feet Cruising Speed: 21 Knots
 Guest Capacity: 3,012 (Double Occupancy) Total Staff: 1,150 Registry: Panama



Riviera • Deck 1



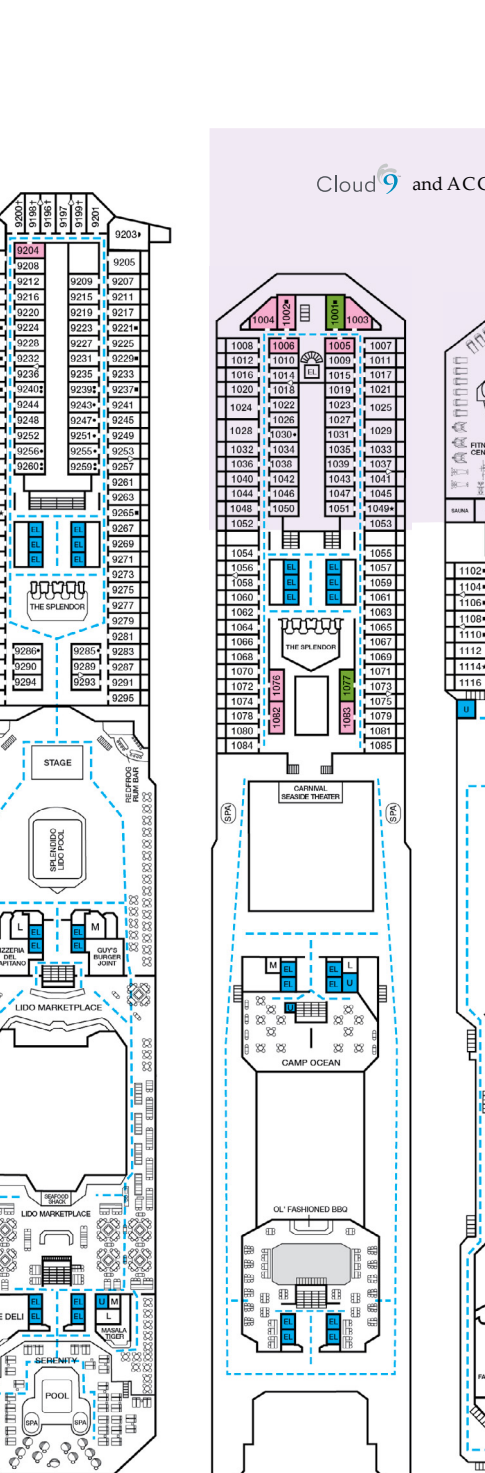
Main • Deck 2



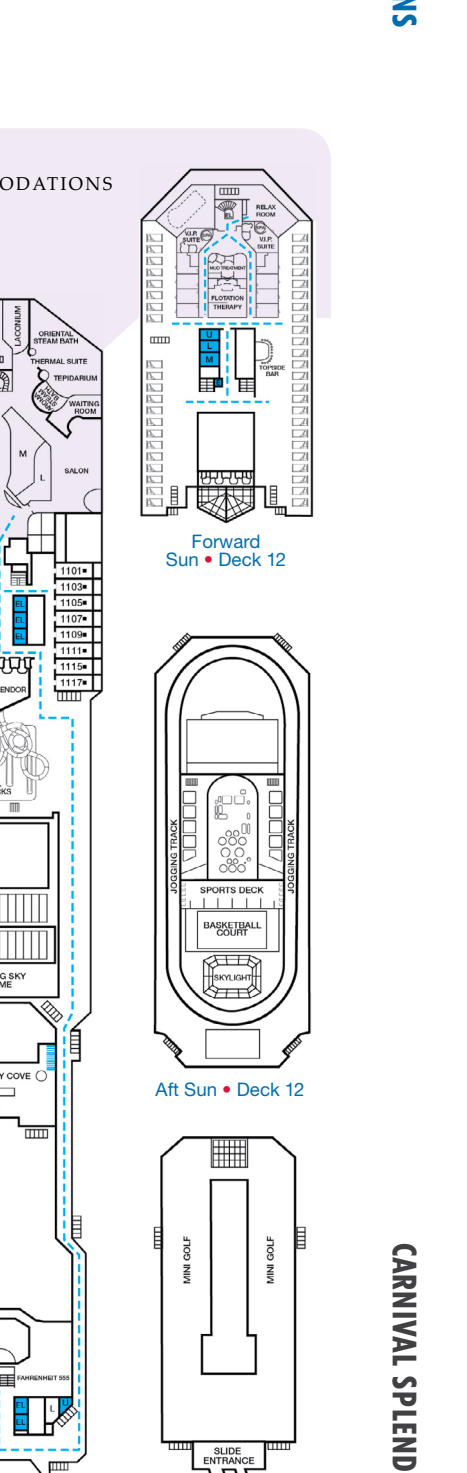
Lobby • Deck 3



Atlantic • Deck 4



Promenade • Deck 5



Upper • Deck 6



Empress • Deck 7



Verandah • Deck 8



Lido • Deck 9



Panorama • Deck 10



Spa • Deck 11



Sky • Deck 14

